

Fig. Kacmaz No.	Oem No	Oem Old No	Pcs.	Ürün Tanımı	Description	Sizes	Notes	[X1] : R.6,38-0,76	[X2] : R.8,73-1,00
1	0630 501 042		1	PRİZ.KEÇE KAPAK ÖN SEKMANI	RETAINING RING	62.0X2.0mm		◆	◆
2	1304 302 366		1	PRİZ.KEÇE KAPAK ÖN KEÇE	OIL SEAL			◆	◆
3	1304 302 371		1	PRİZDİREK KEÇE KAPAĞI	COVER			◆	◆
4	0630 501 051		1	PRİZ.KEÇE KAPAK ÖN SEKMANI	RETAINING RING	82.0X2.5mm		◆	◆
5	1304 302 232		1	PRİZ.KEÇE KAPAK EMN.SACI	GUARD			◆	◆
6	1304 302 361		1	PRİZDİREK KEÇE KAPAĞI	COVER			◆	◆
6	1304 302 381		1	PRİZDİREK KEÇE KAPAĞI	COVER			◆	◆
6	1304 302 355		1	PRİZDİREK KEÇE KAPAĞI	COVER			◆	◆
6	1304 302 350		1	PRİZDİREK KEÇE KAPAĞI	COVER			◆	◆
6	1304 302 352		1	PRİZDİREK KEÇE KAPAĞI	COVER			◆	◆
6	1304 302 356		1	PRİZDİREK KEÇE KAPAĞI	COVER			◆	◆
7	0501 322 828	(0501 316 990)	1	PRİZ.KEÇE KAPAK CONTASI	SHEET GASKET			◆	◆
8	K20.01008 0734 310 104	(0734 310 161)	1	PRİZDİREK KEÇESİ	OIL SEAL	52.0X68.0X8.0mm		◆	◆
9	1304 301 332		1	ŞANZIMAN ÖN GÖVDE	HOUSING			◆	◆
9	K20.02119 1324 301 169		1	ŞANZIMAN ÖN GÖVDE	HOUSING			◆	◆
10	0501 313 379		1	ŞANZIMAN ÖN GÖVDE CONTASI	GASKET			◆	◆
10	K20.01986 0501 321 065		1	ŞANZIMAN ÖN GÖVDE CONTASI	GASKET			◆	◆
11	1204 308 123		1	PRİZDİREK ÖN BİLYA RAYNELİ	SHIM	1.00mm		◆	◆
11	0730 002 659		1	PRİZDİREK ÖN BİLYA RAYNELİ	SHIM	1.30mm		◆	◆
11	0730 002 658		1	PRİZDİREK ÖN BİLYA RAYNELİ	SHIM	1.40mm		◆	◆
11	K20.01724 0730 002 657		1	PRİZDİREK ÖN BİLYA RAYNELİ	SHIM	1.50mm		◆	◆
11	0730 002 656		1	PRİZDİREK ÖN BİLYA RAYNELİ	SHIM	1.60mm		◆	◆
11	0730 002 655		1	PRİZDİREK ÖN BİLYA RAYNELİ	SHIM	1.70mm		◆	◆
11	0730 002 654		1	PRİZDİREK ÖN BİLYA RAYNELİ	SHIM	1.80mm		◆	◆
11	0730 006 169		1	PRİZDİREK ÖN BİLYA RAYNELİ	SHIM	1.90mm		◆	◆
11	0730 006 180		1	PRİZDİREK ÖN BİLYA RAYNELİ	SHIM	2.00mm		◆	◆
11	0730 006 182		1	PRİZDİREK ÖN BİLYA RAYNELİ	SHIM	2.10mm		◆	◆
11	0730 006 184		1	PRİZDİREK ÖN BİLYA RAYNELİ	SHIM	2.20mm		◆	◆
11	0730 005 857		1	PRİZDİREK ÖN BİLYA RAYNELİ	SHIM	2.30mm		◆	◆
12	K20.01151 0750 117 518		1	PRİZDİREK ÖN BİLYA	ROLLER BEARING	71.4X120.0X32.5mm		◆	◆
13	K20.01922 1304 202 208		1	PRİZDİREK 29 DİŞ	INPUT SHAFT 29T			◆	◆
13	K20.01923 1304 202 210		1	PRİZDİREK 29 DİŞ	INPUT SHAFT 29T			◆	◆
13	K20.01924 1304 202 212		1	PRİZDİREK 29 DİŞ	INPUT SHAFT 29T			◆	◆
13	K20.01925 1304 202 207		1	PRİZDİREK 29 DİŞ	INPUT SHAFT 29T			◆	◆
13	K20.01926 1304 202 205		1	PRİZDİREK 29 DİŞ	INPUT SHAFT 29T			◆	◆
13	K20.01927 1304 202 206		1	PRİZDİREK 29 DİŞ	INPUT SHAFT 29T			◆	◆
13	K20.01928 1304 202 211		1	PRİZDİREK 29 DİŞ	INPUT SHAFT 29T			◆	◆
14	K20.01501 1304 302 440		1	PRİZDİREK YAĞ PİPETİ	OIL PIPET			◆	◆
15	K20.01502 0630 502 063		1	PRİZDİREK SEKMANI	RETAINING RING	DIN472 58.0X2.0mm		◆	◆
16	0630 501 157		1	KAMALI MİL UÇ BİLYA SEKMANI	RETAINING RING	42.0X2.00mm		◆	◆
16	0630 501 208		1	KAMALI MİL UÇ BİLYA SEKMANI	RETAINING RING	42.0X2.10mm		◆	◆

NOTES :

X1,X2 are used conjunction with the encoded parts.

NOTLAR :

X1,X2 ile kodlanan parçalar birlikte kullanılır.

8 5 1 8 0

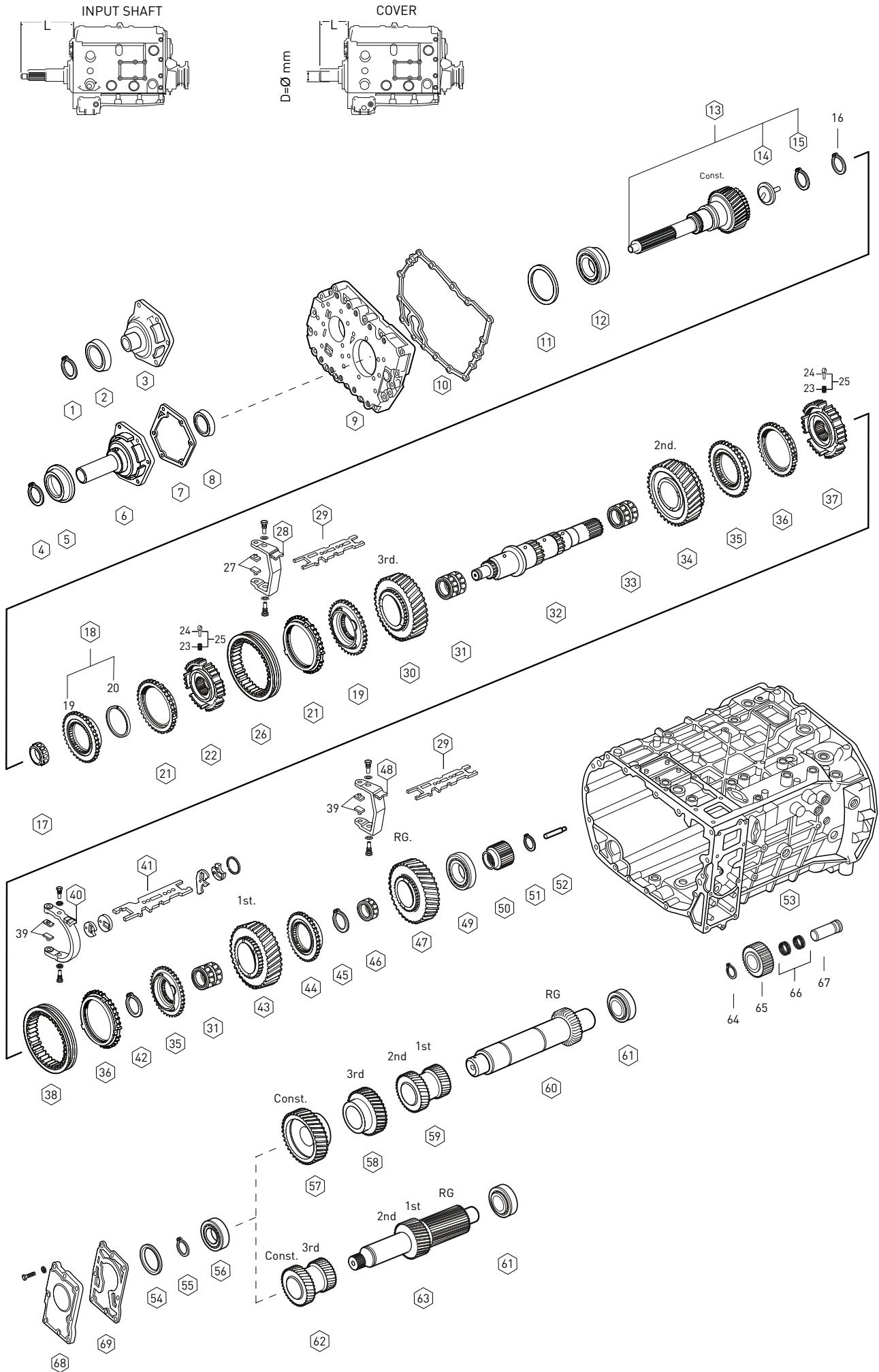


Fig.	Kacmaz No.	Oem No	Oem Old No	Pcs.	Ürün Tanımı	Description	Sizes	Notes	X1 : R.6,38-0,76	X2 : R.8,73-1,00
16		0630 501 210		1	KAMALI MİL UÇ BİLYA SEKMANI	RETAINING RING	42.0X2.20mm		◆	◆
16		0630 501 156		1	KAMALI MİL UÇ BİLYA SEKMANI	RETAINING RING	42.0X2.30mm		◆	◆
16		0630 501 120		1	KAMALI MİL UÇ BİLYA SEKMANI	RETAINING RING	42.0X2.40mm		◆	◆
16		0630 531 052		1	KAMALI MİL UÇ BİLYA SEKMANI	RETAINING RING	42.0X2.50mm		◆	◆
17	K20.01109	0735 371 563	(0750 117 232)	1	KAMALI MİL UÇ BİLYA	ROLLER BEARING	42.07X82.5X40.0mm		◆	◆
18	K20.00915	1304 202 214		1	PRİZDİREK SENKROMENÇ	ENGAGING RING			◆	◆
19	K20.00919	1304 302 425		2	PRİZ-3.VİTES SENKROMENÇ	ENGAGING RING			◆	◆
20	K20.01041	0501 314 108		1	SENKROMENÇ YAĞ KEÇESİ	OIL DAM			◆	◆
21	K20.00916	1311 304 255		2	PRİZ-3.VİTES SENK.FRENLEME	SYNCHRONIZING CONE			◆	◆
22	K20.00917	1304 304 651		1	PRİZ-3.VİTES YILDIZ DİŞLİ	GUIDE SLEEVE			◆	◆
23	K20.00110	0732 040 409		6	PRİZ-3./1.-2.VİT.YIL.DİŞLİ YAYI	SPRING			◆	◆
24	K20.00111	1297 304 436		6	PRİZ-3./1.-2.VİT.YIL.DİŞLİ FİŞEĞİ	PRESSURE PIECE			◆	◆
25	K20.01745	1295 298 956		kit	YILDIZ DİŞLİ YAY FİŞEK TK.	REPAIR KIT			◆	◆
26	K20.00918	1304 304 664		1	PRİZ.-3.VİT.SENK.HALKA	ENGAGING SLEEVE			◆	◆
27	K20.02131	1304 306 107		2	PRİZ.-3.VİT.HİLAL PABUCU	SLIDING PAD			◆	
27	K20.00169	1290 306 066		2	PRİZ.-3.VİT.HİLAL PABUCU	SLIDING PAD				◆
28		1304 306 103		1	PRİZ.-3.VİT.HİLALİ	GEAR SHIFT FORK 3rd/4th			◆	
28		1304 306 102		1	PRİZ.-3.VİT.HİLALİ	GEAR SHIFT FORK 3rd/4th				◆
28		1304 306 106		1	PRİZ.-3.VİT.HİLALİ	GEAR SHIFT FORK 3rd/4th				◆
29		1304 306 115		1	PRİZ.-3./GERİ VİT.HİLAL ÇİTASI	GEAR SHIFT RAIL 3rd/4th/RG			◆	◆
29		1304 306 136		1	PRİZ.-3./GERİ VİT.HİLAL ÇİTASI	GEAR SHIFT RAIL 3rd/4th/RG			◆	◆
30	K20.01929	1304 304 637		1	3.VİTES DİŞLİSİ 24 DİŞ	GEAR 3rd 24T			◆	
30	K20.01930	1304 304 636		1	3.VİTES DİŞLİSİ 29 DİŞ	GEAR 3rd 29T				◆
31		0750 115 430		2	1./3.VİTES DİŞLİ MASURA BİLYA	NEEDLE CAGE	70.0X78.0X30.0mm		◆	◆
32	K20.01931	1304 304 604		1	KAMALI MİL	MAIN SHAFT			◆	◆
33		0735 320 378		1	2.VİTES DİŞLİ MASURA BİLYA	NEEDLE CAGE	75.0X83.0X55.0mm		◆	◆
34	K20.01932	1304 304 582		1	2.VİTES DİŞLİSİ 29 DİŞ	GEAR 2nd 29T			◆	
34	K20.01933	1304 304 581		1	2.VİTES DİŞLİSİ 33 DİŞ	GEAR 2nd 33T				◆
35	K20.00837	1311 304 015		2	1.-2.VİTES SENKROMENÇ	ENGAGING RING			◆	◆
36	K20.00781	1268 304 594	(1268 304 445)	2	1.-2.VİT.SENK.FRENLEME	SYNCHRONIZING CONE			◆	◆
37	K20.00913	1304 304 576		1	1.-2.VİTES YILDIZ DİŞLİ	GUIDE SLEEVE			◆	◆
38	K20.00255	1304 304 597	(1304 304 541)	1	1./2.VİT.SENK.HALKA	ENGAGING SLEEVE	OLD		◆	◆
38	K20.00255	1324 304 053		1	1./2.VİT.SENK.HALKA	ENGAGING SLEEVE	NEW		◆	◆
39	K20.00169	1290 306 066		2	1.-2./GERİ VİT.HİLAL PABUCU	SLIDING PAD			◆	◆
40		1304 306 043		1	1./2.VİTES HİLALİ	GEAR SHIFT FORK 1st/2nd			◆	◆
40		1304 306 009		1	1./2.VİTES HİLALİ	GEAR SHIFT FORK 1st/2nd			◆	◆
41		1304 306 112		1	1./2.VİTES HİLAL ÇİTASI	GEAR SHIFT RAIL 1st/2nd			◆	◆
41		1304 306 137		1	1./2.VİTES HİLAL ÇİTASI	GEAR SHIFT RAIL 1st/2nd			◆	◆
42		0630 501 325		1	1.-2.VİT.YILDIZ DİŞLİ SEKMANI	RETAINING RING	2.80mm		◆	◆
42		0630 501 326		1	1.-2.VİT.YILDIZ DİŞLİ SEKMANI	RETAINING RING	2.90mm		◆	◆
42		0630 501 327		1	1.-2.VİT.YILDIZ DİŞLİ SEKMANI	RETAINING RING	3.00mm		◆	◆

NOTES :

X1,X2 are used conjunction with the encoded parts.

NOTLAR :

X1,X2 ile kodlanan parçalar birlikte kullanılır.

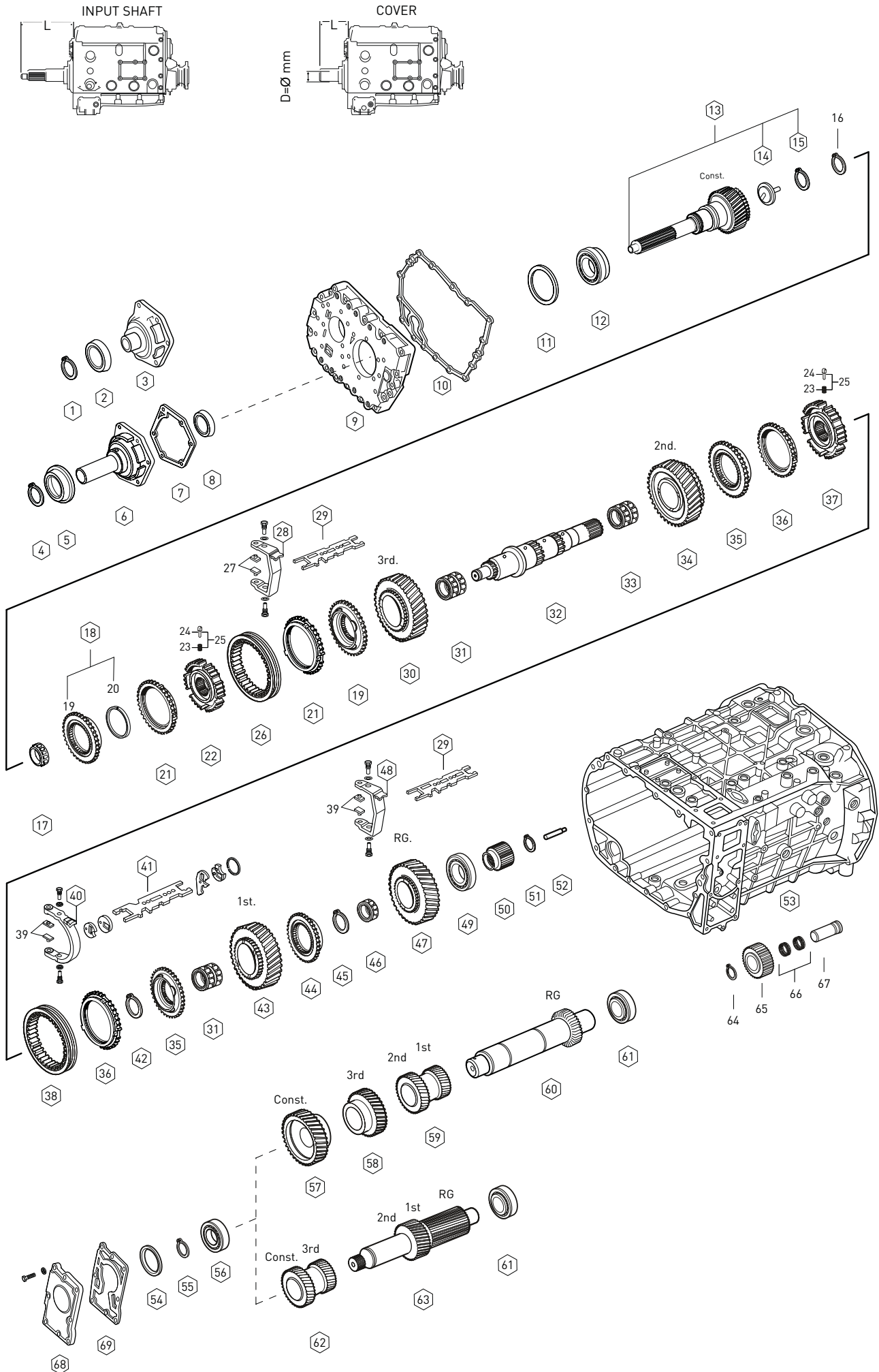


Fig.	Kacmaz No.	Oem No	Oem Old No	Pcs.	Ürün Tanımı	Description	Sizes	Notes	X1: R,6,38-076	X2: R,8,73-1,00
42		0630 501 328		1	1.-2.VİT.YILDIZ DİŞLİ SEKMANI	RETAINING RING	3.10mm		◆	◆
42		0630 501 329		1	1.-2.VİT.YILDIZ DİŞLİ SEKMANI	RETAINING RING	3.20mm		◆	◆
43	K20.01934	1304 304 587		1	1.VİTES DİŞLİSİ 33 DİŞ	GEAR 1st 33T			◆	
43	K20.01935	1304 304 586		1	1.VİTES DİŞLİSİ 38 DİŞ	GEAR 1st 38T				◆
44	K20.00263	1304 304 007		1	GERİ VİTES YILDIZ DİŞLİ 20 DİŞ	HUB 20T			◆	◆
45		0630 501 067		1	GERİ VİT.YILDIZ DİŞLİ SEKMANI	RETAINING RING	2.40mm		◆	◆
45		0630 531 141		1	GERİ VİT.YILDIZ DİŞLİ SEKMANI	RETAINING RING	2.50mm		◆	◆
45		0630 501 197		1	GERİ VİT.YILDIZ DİŞLİ SEKMANI	RETAINING RING	2.60mm		◆	◆
45		0630 501 194		1	GERİ VİT.YILDIZ DİŞLİ SEKMANI	RETAINING RING	2.70mm		◆	◆
45		0630 501 195		1	GERİ VİT.YILDIZ DİŞLİ SEKMANI	RETAINING RING	2.80mm		◆	◆
46	K20.01309	0750 115 973	(0750 115 225)	1	GERİ VİTES MASURA BİLYA	NEEDLE CAGE	60.0X68.0X39.0mm		◆	◆
47	K20.01936	1304 304 672		1	GERİ VİTES DİŞLİSİ 35 DİŞ	REVERSE GEAR 35T			◆	◆
48		1304 306 011		1	GERİ VİTES HİLALİ	GEAR SHIFT FORK RG			◆	◆
49		0735 371 599		1	KAMALI MİL ARKA BİLYA	ROLLER BEARING	50.8X104.7X36.5mm		◆	◆
50	K20.01937	1304 304 588		1	GÜNEŞ DİŞLİSİ 48 DİŞ	SUN GEAR 48T			◆	◆
51		0630 501 145		1	GÜNEŞ DİŞLİ SEKMANI	RETAINING RING	2.10mm		◆	◆
51		0630 501 146		1	GÜNEŞ DİŞLİ SEKMANI	RETAINING RING	2.20mm		◆	◆
51		0630 501 147		1	GÜNEŞ DİŞLİ SEKMANI	RETAINING RING	2.30mm		◆	◆
51		0630 501 148		1	GÜNEŞ DİŞLİ SEKMANI	RETAINING RING	2.40mm		◆	◆
51		0630 531 064		1	GÜNEŞ DİŞLİ SEKMANI	RETAINING RING	2.50mm		◆	◆
51		0630 501 118		1	GÜNEŞ DİŞLİ SEKMANI	RETAINING RING	2.60mm		◆	◆
51		0630 501 116		1	GÜNEŞ DİŞLİ SEKMANI	RETAINING RING	2.70mm		◆	◆
51		0630 501 114		1	GÜNEŞ DİŞLİ SEKMANI	RETAINING RING	2.80mm		◆	◆
51		0630 501 112		1	GÜNEŞ DİŞLİ SEKMANI	RETAINING RING	2.90mm		◆	◆
51	K20.01960	0630 531 065		1	GÜNEŞ DİŞLİ SEKMANI	RETAINING RING	3.00mm		◆	◆
51		0630 501 150		1	GÜNEŞ DİŞLİ SEKMANI	RETAINING RING	3.10mm		◆	◆
51		0630 501 151		1	GÜNEŞ DİŞLİ SEKMANI	RETAINING RING	3.20mm		◆	◆
52	K20.01506	1324 304 014		1	KAMALI MİL YAĞ BORUSU	OIL PIPE			◆	◆
53		1304 301 375	(1304 301 337)	1	ŞANZIMAN ARKA GÖVDE	HOUSING			◆	◆
54		0730 002 939		1	GRUP MİLİ ÖN BİLYA PULU	THRUST WASHER	1.50mm		◆	◆
54		0730 002 938		1	GRUP MİLİ ÖN BİLYA PULU	THRUST WASHER	1.60mm		◆	◆
54		0730 002 937		1	GRUP MİLİ ÖN BİLYA PULU	THRUST WASHER	1.70mm		◆	◆
54		0730 002 936		1	GRUP MİLİ ÖN BİLYA PULU	THRUST WASHER	1.80mm		◆	◆
54		0730 002 935		1	GRUP MİLİ ÖN BİLYA PULU	THRUST WASHER	1.90mm		◆	◆
54		0730 002 934		1	GRUP MİLİ ÖN BİLYA PULU	THRUST WASHER	2.00mm		◆	◆
54		0730 004 732		1	GRUP MİLİ ÖN BİLYA PULU	THRUST WASHER	2.10mm		◆	◆
54		0730 004 734		1	GRUP MİLİ ÖN BİLYA PULU	THRUST WASHER	2.20mm		◆	◆
54		0730 004 736		1	GRUP MİLİ ÖN BİLYA PULU	THRUST WASHER	2.30mm		◆	◆
54		0730 003 436		1	GRUP MİLİ ÖN BİLYA PULU	THRUST WASHER	2.40mm		◆	◆
55		0630 501 040		1	GRUP MİLİ ÖN BİLYA SEKMANI	RETAINING RING	2.00mm		◆	◆
55		0630 501 140		1	GRUP MİLİ ÖN BİLYA SEKMANI	RETAINING RING	2.10mm		◆	◆

NOTES :

X1,X2 are used conjunction with the encoded parts.

NOTLAR :

X1,X2 ile kodlanan parçalar birlikte kullanılır.

8 S 180

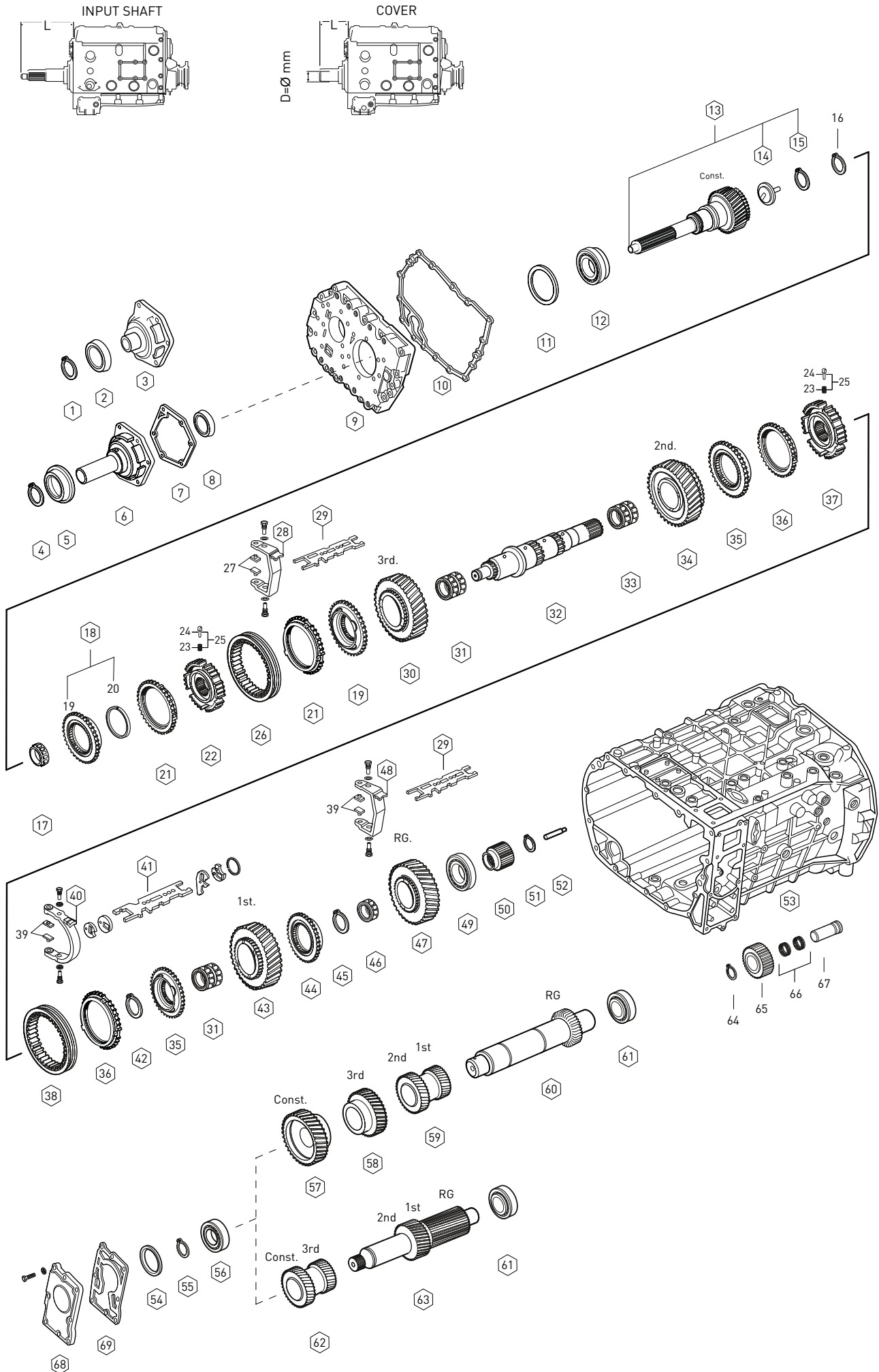


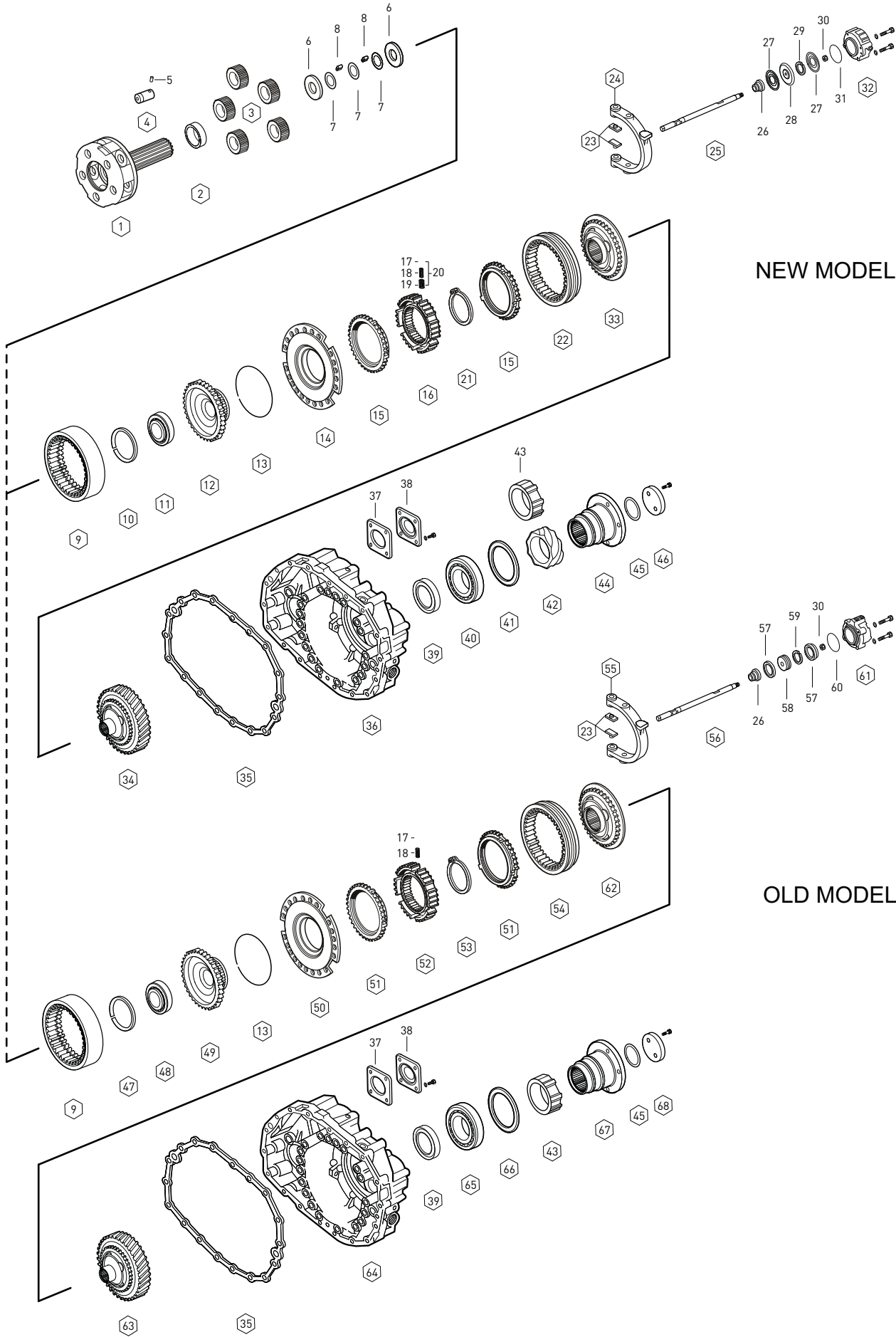
Fig.	Kacmaz No.	Oem No	Oem Old No	Pcs.	Ürün Tanımı	Description	Sizes	Notes	X1: R.6,38-0,76	X2: R.8,73-1,00
55		0630 501 104		1	GRUP MILİ ÖN BİLYA SEKMANI	RETAINING RING	2.20mm		◆	◆
55		0630 501 076		1	GRUP MILİ ÖN BİLYA SEKMANI	RETAINING RING	2.30mm		◆	◆
55		0630 501 074		1	GRUP MILİ ÖN BİLYA SEKMANI	RETAINING RING	2.40mm		◆	◆
55		0730 513 862		1	GRUP MILİ ÖN BİLYA SEKMANI	RETAINING RING	2.50mm		◆	◆
56	K20.01154	0735 371 096		1	GRUP MILİ ÖN BİLYA	ROLLER BEARING	40.0X85.0X33.0mm		◆	◆
57	K20.01938	1304 303 294		1	TAKVİYE DİŞLİ KARŞILIĞI 31 DİŞ	GEAR Const. 31T			◆	
58	K20.01939	1304 303 293		1	3.VİTES DİŞLİ KARŞILIĞI 34 DİŞ	GEAR 3rd 34T			◆	
59	K20.01940	1304 303 292		1	1./2.VİT.DİŞLİ KARŞ.19/23 DİŞ	DOUBLE GEAR 19/23T			◆	
60	K20.01941	1304 303 291		1	GRUP MILİ 16 DİŞ	COUNTER SHAFT 16T			◆	
61	K20.01123	0750 117 083	(1246 203 007)	1	GRUP MILİ ARKA BİLYA	ROLLER BEARING	50.8X95.2X27.7mm		◆	◆
62	K20.01942	1304 303 289		1	TAK./3.VİT.DİŞLİ KARŞ.23/31 DİŞ	DOUBLE GEAR 23/31T			◆	◆
63	K20.01943	1304 303 322		1	GRUP MILİ 16/19 DİŞ	COUNTER SHAFT 16/19T			◆	
64		0630 502 022		1	KÜÇÜK GERİ VİT.KİLİT SEKMANI	LOCK RING	1.75mm		◆	◆
65	K20.00577	1304 305 043		1	KÜÇÜK GERİ VİTES 22 DİŞ	REV.IDLER GEAR 22T			◆	◆
66	K20.01333	0735 358 192		2	KÜÇÜK GERİ VİT.MAS.BİLYA	NEEDLE CAGE	40.0X60.0X26.0mm		◆	◆
67	K20.00576	1304 305 030	(1304 305 002)	1	KÜÇÜK GERİ VİTES PİMİ	PIN			◆	◆
68	K20.00939	0501 004 551		1	ŞANZİMAN YAĞ POMPASI	OIL PUMP			◆	◆
69		0501 322 829		1	ŞANZİMAN YAĞ POMPA CONTASI	SHEET GASKET			◆	◆

NOTES :

X1,X2 are used conjunction with the encoded parts.

NOTLAR :

X1,X2 ile kodlanan parçalar birlikte kullanılır.



NEW MODEL

OLD MODEL

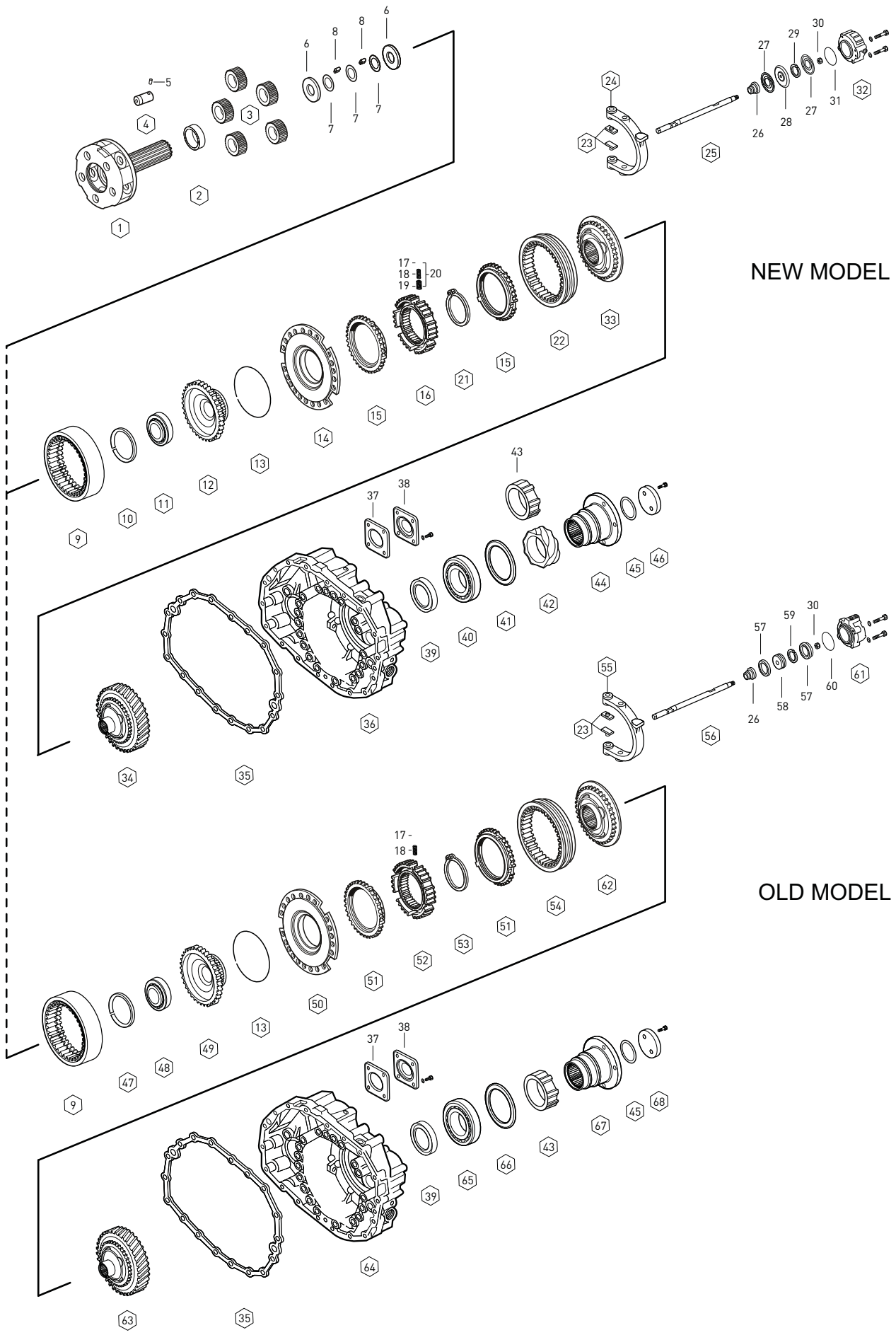
Fig.	Kacmaz No.	Oem No	Oem Old No	Pcs.	Ürün Tanımı	Description	Sizes	Notes	X1: R.6,38-076	X2: R.8,73-1,00
1		1304 232 092		1	ŞANZIMAN HEYKELİ	PLANETARY CARRIER			◆	◆
2	K20.01612	1304 333 012		1	ŞANZIMAN HEYKEL BURCU	BUSHING			◆	
3		1304 232 051		5	HEYK.KOZA DİŞLİ TAKIMI	PLANETARY GEAR SET			◆	◆
4	K20.00321	1304 332 111	(1304 332 019)	5	HEYKEL KOZA DİŞLİ PİMİ	PLANET SHAFT			◆	◆
5		0631 329 037		5	HEY.KOZA DİŞLİ PİM KİLİT PİMİ	LOCK PIN	4.0X26.0mm		◆	◆
6	K20.01508	0730 150 767	(0501 304 692)	10	HEYKEL KOZA DİŞLİ PULU	THRUST WASHER			◆	◆
7	K20.01509	0730 103 102		15	HEYKEL KOZA DİŞLİ PULU	THRUST WASHER			◆	◆
8	K20.01451	0735 470 115		200	HEYK.KOZA DİŞ.TANE BİLYA	NEEDLE ROLLER	5X15.3mm		◆	◆
9		1304 332 122		1	ÇEMBER DİŞLİ 117 DİŞ	RING WHEEL 117 T			◆	◆
10		0730 513 760		1	PLANET ÇAN DİŞLİ BİLYA SEK.	RETAINING RING	2.00mm		◆	
10		0730 513 759		1	PLANET ÇAN DİŞLİ BİLYA SEK.	RETAINING RING	2.10mm		◆	
10		0730 513 758		1	PLANET ÇAN DİŞLİ BİLYA SEK.	RETAINING RING	2.20mm		◆	
10		0730 513 757		1	PLANET ÇAN DİŞLİ BİLYA SEK.	RETAINING RING	2.30mm		◆	
10		0730 513 756		1	PLANET ÇAN DİŞLİ BİLYA SEK.	RETAINING RING	2.40mm		◆	
10		0730 513 755		1	PLANET ÇAN DİŞLİ BİLYA SEK.	RETAINING RING	2.50mm		◆	
11	K20.01133	0750 116 165	(0635 338 049)	1	PLANET ÇAN DİŞLİ BİLYASI	ROLLER BEARING	80.0X110.0X16.0mm		◆	
12	K20.01944	1304 332 210		1	PLANET ÇAN DİŞLİ 117 DİŞ	CARRIER HUB 117T	H=81.80		◆	
13		0730 505 053		1	ÇEMBER DİŞLİ SEKMANI	SPRING RING	2.00mm		◆	◆
14	K20.00230	1304 233 006	(1304 233 011)	1	TEPSİ SENKROMENÇ	FLANGE			◆	
15	K20.00038	1296 333 045	(1296 333 022)	2	AĞIR SERİ SENK.FRENLEME	SYNCHRONIZING CONE			◆	
16	K20.00185	1313 333 001		1	AĞIR SERİ YILDIZ DİŞLİ	GUIDE SLEEVE			◆	
17	K20.00471	1240 304 278		9	AĞIR SERİ YILDIZ DİŞ.FİŞEĞİ	PRESSURE PIECE			◆	
18	K20.00469	0732 040 385		9	AĞIR SERİ YILDIZ DİŞ.YAYI	SPRING			◆	
19	K20.00470	0732 040 386		9	AĞIR SERİ YILDIZ DİŞ.YAYI	SPRING			◆	
20	K20.00810	1272 298 934		kit	A.SERİ YIL.DİŞ.YAY FİŞEK TK.	REPAIR KIT			◆	
21		0630 501 175		1	AĞIR SERİ YILDIZ DİŞLİ SEK.	RETAINING RING	3.70mm		◆	
21		0630 501 174		1	AĞIR SERİ YILDIZ DİŞLİ SEK.	RETAINING RING	3.80mm		◆	
21		0630 501 173		1	AĞIR SERİ YILDIZ DİŞLİ SEK.	RETAINING RING	3.90mm		◆	
21		0630 501 061		1	AĞIR SERİ YILDIZ DİŞLİ SEK.	RETAINING RING	4.00mm		◆	
22	K20.00267	1304 333 011		1	AĞIR SERİ SENK.HALKA	ENGAGING SLEEVE			◆	
23	K20.00328	1272 334 003		2	AĞIR SERİ HİLAL PABUCU	SLIDING PAD			◆	◆
24		1304 334 063		1	AĞIR SERİ HİLALİ	GEAR SHIFT FORK			◆	
25		1304 334 077		1	AĞIR SERİ HİLAL MİLİ	GEAR SHIFT RAIL			◆	
26	K20.01017	0750 112 047		1	AĞIR SERİ HİLAL MİL KEÇESİ	FLANGE PACKING	22.0X36.0X14.5mm		◆	◆
27	K20.01018	0734 307 287		2	AĞIR SERİ HAVA KEÇESİ	SEALING RING	50.0X100.0X7.5mm		◆	
28		1315 334 041		1	AĞIR SERİ HİLAL MİL PİSTONU	PISTON			◆	
29	K20.01614	0750 112 096		1	AĞIR SERİ HİLAL MİL FİBERİ	GUIDE RING	100.2X88.4X4.8mm		◆	
30	K20.01774	0737 006 095		1	AĞIR SERİ HİLAL MİL SOMUNU	NUT	M16X1.5mm		◆	◆
31		0634 313 338		1	AĞIR SERİ SİLİNDİR ORINGİ	O-RING	108.0X3.0mm		◆	
32	K20.00888	1304 334 079	(1304 334 073)	1	AĞIR SERİ SİLİNDİR GÖVDESİ	CYLINDER			◆	
33	K20.00231	1304 233 013	(1297 233 059)	1	SERİ SENKROMENÇ	ENGAGING RING			◆	

NOTES :

X1,X2 are used conjunction with the encoded parts.

NOTLAR :

X1,X2 ile kodlanan parçalar birlikte kullanılır.



NEW MODEL

OLD MODEL

Fig.	Kacmaz No.	Oem No	Oem Old No	Pcs.	Ürün Tanımı	Description	Sizes	Notes	X1: R.6,38-076	X2: R.8,73-1,00
34	K20.00323	1304 232 085	(1304 232 083)	1	RETARDER DİŞLİSİ 55 DİŞ	RETARDER GEAR 55T			◆	
35		1304 301 063	(1304 301 030)	1	ŞANZ.ARKA GÖVDE CONTASI	GASKET			◆	◆
36		1304 301 381	(1304 301 321)	1	ŞANZİMAN ARKA GÖVDE	HOUSING			◆	
37		1238 308 201	(1238 308 166)	1	PTO BAĞLANTI KAPAK CONTASI	GASKET			◆	◆
38		1304 301 034		1	PTO BAĞLANTI KAPAĞI	COVER			◆	◆
39	K20.01012	0734 319 439		1	ŞANZİMAN FLANŞ KEÇESİ	OIL SEAL	95.0X115.0X10.0mm		◆	◆
39		0734 310 212		1	ŞANZİMAN FLANŞ KEÇESİ	OIL SEAL	105.0X125.0X12.0mm		◆	
40	K20.01156	0750 116 404	(0750 116 197)	1	ŞANZİMAN ARKA BİLYA	ROLLER BEARING	80.0X140.0X26.0mm		◆	
41	K20.01615	2049 309 535		1	ŞANZ.ARKA BİLYA RAYNELİ	SHIM	1.90mm		◆	
41	K20.01616	0730 006 534		1	ŞANZ.ARKA BİLYA RAYNELİ	SHIM	1.50mm		◆	
41	K20.01617	2001617		1	ŞANZ.ARKA BİLYA RAYNELİ	SHIM	0.30mm		◆	
41	K20.01618	2001618		1	ŞANZ.ARKA BİLYA RAYNELİ	SHIM	0.20mm		◆	
41	K20.01619	2001619		1	ŞANZ.ARKA BİLYA RAYNELİ	SHIM	0.10mm		◆	
42		1304 338 020		1	ŞANZ.KİLOMETRE DİŞLİSİ	SPEEDOMETER GEAR			◆	
43		1304 332 147		1	ŞANZ.KİLOMETRE DEVİR SACI	PULSE DISK			◆	◆
44		1304 338 019		1	ŞANZİMAN FLANŞI	COMP.FLANGE	8-H, Ø165mm		◆	
44	K20.00340	1304 338 097		1	ŞANZİMAN FLANŞI	COMP.FLANGE	4-H, Ø180mm		◆	
44		1304 343 053		1	ŞANZİMAN FLANŞI	COMP.FLANGE			◆	
44		1304 343 051		1	ŞANZİMAN FLANŞI	COMP.FLANGE			◆	
45		0634 313 223		1	ŞANZİMAN FLANŞ ORİNGİ	O-RING			◆	◆
46	K20.01620	1304 338 072		1	ŞANZİMAN FLANŞ PULU	WASHER			◆	
47		0630 513 191		1	PLANET ÇAN DİŞLİ BİLYA SEK.	RETAINING RING	2.00mm			◆
47		0630 513 190		1	PLANET ÇAN DİŞLİ BİLYA SEK.	RETAINING RING	2.10mm			◆
47		0630 513 189		1	PLANET ÇAN DİŞLİ BİLYA SEK.	RETAINING RING	2.20mm			◆
47		0630 513 188		1	PLANET ÇAN DİŞLİ BİLYA SEK.	RETAINING RING	2.30mm			◆
47		0630 513 187		1	PLANET ÇAN DİŞLİ BİLYA SEK.	RETAINING RING	2.40mm			◆
47		0630 513 073		1	PLANET ÇAN DİŞLİ BİLYA SEK.	RETAINING RING	2.50mm			◆
48	K20.01334	0735 340 080	(0635 338 028)	1	PLANET ÇAN DİŞLİ BİLYASI	ROLLER BEARING	70.0X90.0X10.0mm			◆
49	K20.01945	1304 332 071		1	PLANET ÇAN DİŞLİ 117 DİŞ	CARRIER HUB 117T				◆
50	K20.00229	1304 233 005	(1304 233 004)	1	TEPSİ SENKROMENÇ	FLANGE				◆
51	K20.00268	1304 333 005	(1304 333 021)	2	AĞIR SERİ SENK.FRENLEME	SYNCHRONIZING CONE				◆
52	K20.00265	1304 332 066		1	AĞIR SERİ YILDIZ DİŞLİ	GUIDE SLEEVE				◆
53		0630 501 385		1	AĞIR SERİ YILDIZ DİŞLİ SEK.	RETAINING RING	2.90mm			◆
53		0630 501 056		1	AĞIR SERİ YILDIZ DİŞLİ SEK.	RETAINING RING	3.00mm			◆
53		0630 501 152		1	AĞIR SERİ YILDIZ DİŞLİ SEK.	RETAINING RING	3.10mm			◆
53		0630 501 141		1	AĞIR SERİ YILDIZ DİŞLİ SEK.	RETAINING RING	3.20mm			◆
54	K20.00264	1304 332 089	(1304 332 065)	1	AĞIR SERİ SENK.HALKA	ENGAGING SLEEVE				◆
55		1304 334 039		1	AĞIR SERİ HİLALİ	GEAR SHIFT FORK				◆
56		1304 334 052		1	AĞIR SERİ HİLAL MİLİ	GEAR SHIFT RAIL				◆
57	K20.01023	0734 307 296	(0750 112 049)	2	AĞIR SERİ HAVA KEÇESİ	RING	74.0X84.0X5.0mm			◆
58		1304 334 072	(1304 334 014)	1	AĞIR SERİ HİLAL MİL PİSTONU	PISTON				◆

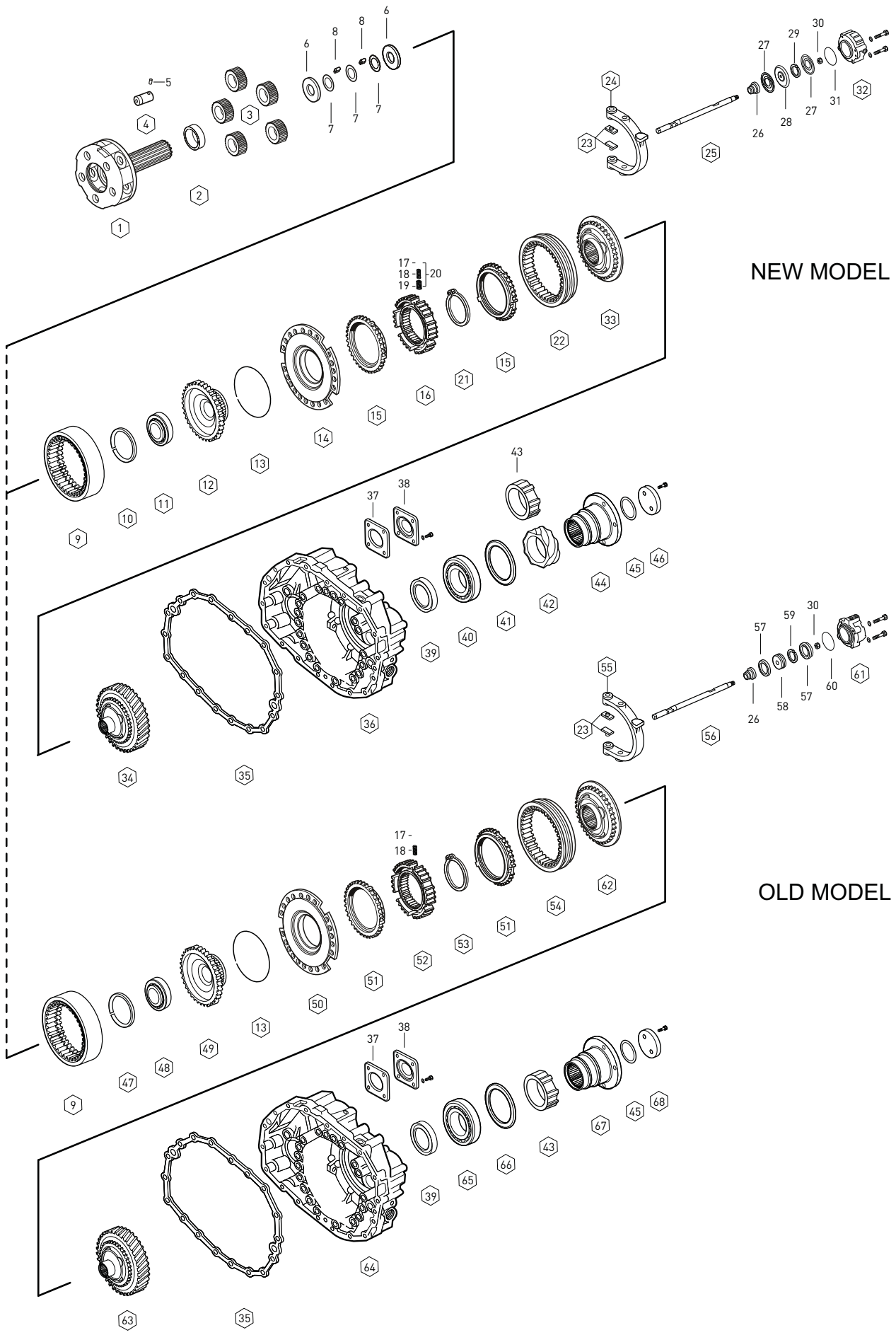
NOTES :

X1,X2 are used conjunction with the encoded parts.

NOTLAR :

X1,X2 ile kodlanan parçalar birlikte kullanılır.

8 S 180



NEW MODEL

OLD MODEL

Fig.	Kacmaz No.	Oem No	Oem Old No	Pcs.	Ürün Tanımı	Description	Sizes	Notes
59	K20.01621	0750 145 003		1	AĞIR SERİ HİHAL MİL FİBERİ	GUIDE RING	78.0X82.7X5.5mm	◆
60		0634 313 232		1	AĞIR SERİ SİLİNDİR ORİNGİ	O-RING	95.0X2.0mm	◆
61		1304 334 061	(1304 334 037)	1	AĞIR SERİ SİLİNDİR GÖVDESİ	CYLINDER		◆
62	K20.00266	1304 332 075		1	SERİ SENKROMENÇ	ENGAGING RING		◆
63	K20.01947	1304 313 133		1	RETARDER DİŞLİSİ 35 DİŞ	RETARDER GEAR 35T		◆
64		1304 301 360	(1304 301 316)	1	ŞANZIMAN ARKA GÖVDE	HOUSING		◆
65	K20.01129	0750 116 048	(0735 330 137)	1	ŞANZIMAN ARKA BİLYA	ROLLER BEARING	78.0X130.0X25.0mm	◆
66		0730 002 549		1	ŞANZ.ARKA BİLYA RAYNELİ	SHIM	1.30mm	◆
66		0730 002 548		1	ŞANZ.ARKA BİLYA RAYNELİ	SHIM	1.40mm	◆
66		0730 002 547		1	ŞANZ.ARKA BİLYA RAYNELİ	SHIM	1.50mm	◆
66	K20.01622	0730 002 546		1	ŞANZ.ARKA BİLYA RAYNELİ	SHIM	1.60mm	◆
66		0730 002 545		1	ŞANZ.ARKA BİLYA RAYNELİ	SHIM	1.70mm	◆
66		0730 002 544		1	ŞANZ.ARKA BİLYA RAYNELİ	SHIM	1.80mm	◆
66		0730 002 543		1	ŞANZ.ARKA BİLYA RAYNELİ	SHIM	1.90mm	◆
67		0501 313 792		1	ŞANZIMAN FLANŞI	COMP.FLANGE		◆
67		1304 338 069		1	ŞANZIMAN FLANŞI	COMP.FLANGE	4-H, Ø180mm	◆
67		1304 338 037		1	ŞANZIMAN FLANŞI	COMP.FLANGE	4-H, Ø165mm	◆
68	K20.01626	1304 338 045		1	ŞANZIMAN FLANŞ PULU	WASHER		◆

NOTES :
X1,X2 are used conjunction with the encoded parts.

NOTLAR :
X1,X2 ile kodlanan parçalar birlikte kullanılır.

SYNCHRONIZER KIT 1st/2nd

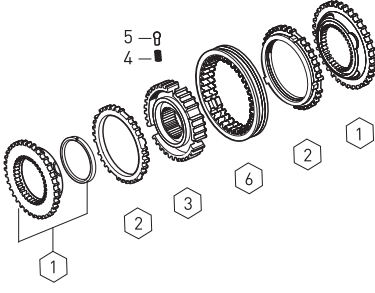


Fig.	Kacmaz No.	Oem No	Oem Old No	Pcs.	Ürün Tanımı	Description
	K20.00912	1304 298 964		Kit	1./2.VİT.SENKROMENÇ KİT	SYNCH.KIT 1st/2nd.
1	K20.00837	1311 304 015		2	1./2.VİT.SENKROMENÇ	ENGAGING RING
2	K20.00781	1268 304 594	(1268 304 445)	2	1./ 2.VİT.SENK.FRENLEME	SYNCH.CONE
3	K20.00913	1304 304 576		1	1./ 2.VİT.YILDIZ DİŞLİ	GUIDE SLEEVE
4	K20.00110	0732 040 409		3	1./ 2.VİT.YILDIZ DİŞ.YAYI	SPRING
5	K20.00111	1297 304 436		3	1./ 2.VİT.YILDIZ DİŞ.FİŞEĞİ	PRESSURE PIECE
6	K20.00255	1304 304 597	(1304 304 541)	1	1./ 2.VİT.SENK.HALKA	ENGAGING SLEEVE

SYNCHRONIZER KIT 3rd/Const.

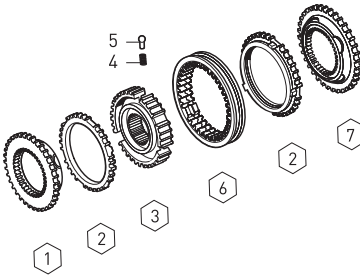


Fig.	Kacmaz No.	Oem No	Oem Old No	Pcs.	Ürün Tanımı	Description
	K20.00914	1304 298 965		Kit	PRİZ./3.VİT.SENKROMENÇ KİT	SYNCH.KIT 3rd/Const.
1	K20.00915	1304 202 214		1	PRİZ.VE 3.VİT.SENKROMENÇ	ENGAGING RING
2	K20.00916	1311 304 255		2	PRİZ.VE 3.VİT.FRENLEME	SYNCH.CONE
3	K20.00917	1304 304 651		1	PRİZ.VE 3.VİT.YILDIZ DİŞLİ	GUIDE SLEEVE
4	K20.00110	0732 040 409		3	3.VİT.YILDIZ DİŞLİ YAYI	SPRING
5	K20.00111	1297 304 436		3	3.VİT.YILDIZ DİŞLİ FİŞEĞİ	PRESSURE PIECE
6	K20.00918	1304 304 664		1	PRİZ.VE 3.VİT.SENK.HALKA	ENGAGING SLEEVE
7	K20.00919	1304 302 425		1	PRİZ.VE 3.VİT.SENKROMENÇ	ENGAGING RING

SYNCHRONIZER KIT 1st/2nd

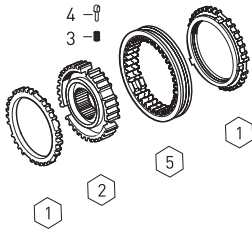


Fig.	Kacmaz No.	Oem No	Oem Old No	Pcs.	Ürün Tanımı	Description
	K20.00920	1304 204 040		Kit	1./2.VİT.SENKROMENÇ KİT	SYNCH.KIT 1st/2nd.
1	K20.00781	1268 304 594	(1268 304 445)	2	1./ 2.VİT.SENK.FRENLEME	SYNCH.CONE
2	K20.00913	1304 304 576		1	1./ 2.VİT.YILDIZ DİŞLİ	GUIDE SLEEVE
3	K20.00110	0732 040 409		3	1./ 2.VİT.YILDIZ DİŞ.YAYI	SPRING
4	K20.00111	1297 304 436		3	1./ 2.VİT.YILDIZ DİŞ.FİŞEĞİ	PRESSURE PIECE
5	K20.00255	1304 304 597	(1304 304 541)	1	1./ 2.VİT.SENK.HALKA	ENGAGING SLEEVE

SYNCHRONIZER KIT 3rd/Const.

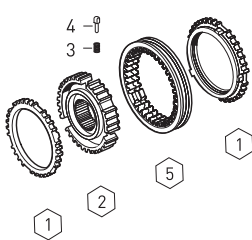


Fig.	Kacmaz No.	Oem No	Oem Old No	Pcs.	Ürün Tanımı	Description
	K20.00921	1304 204 056		Kit	PRİZ./3.VİT.SENKROMENÇ KİT	SYNCH.KIT 3rd/Const.
1	K20.00916	1311 304 255		2	PRİZ./3.VİT.SENKROMENÇ	ENGAGING RING
2	K20.00917	1304 304 651		1	PRİZ./3.VİT.YILDIZ DİŞLİ	GUIDE SLEEVE
3	K20.00110	0732 040 409		3	PRİZ./3.VİT.YILDIZ DİŞ.YAYI	SPRING
4	K20.00111	1297 304 436		3	PRİZ./3.VİT.YILDIZ DİŞ.FİŞEĞİ	PRESSURE PIECE
5	K20.00918	1304 304 664		1	PRİZ./3.VİT.SENK.HALKA	ENGAGING SLEEVE

GEARBOX GASKET KIT

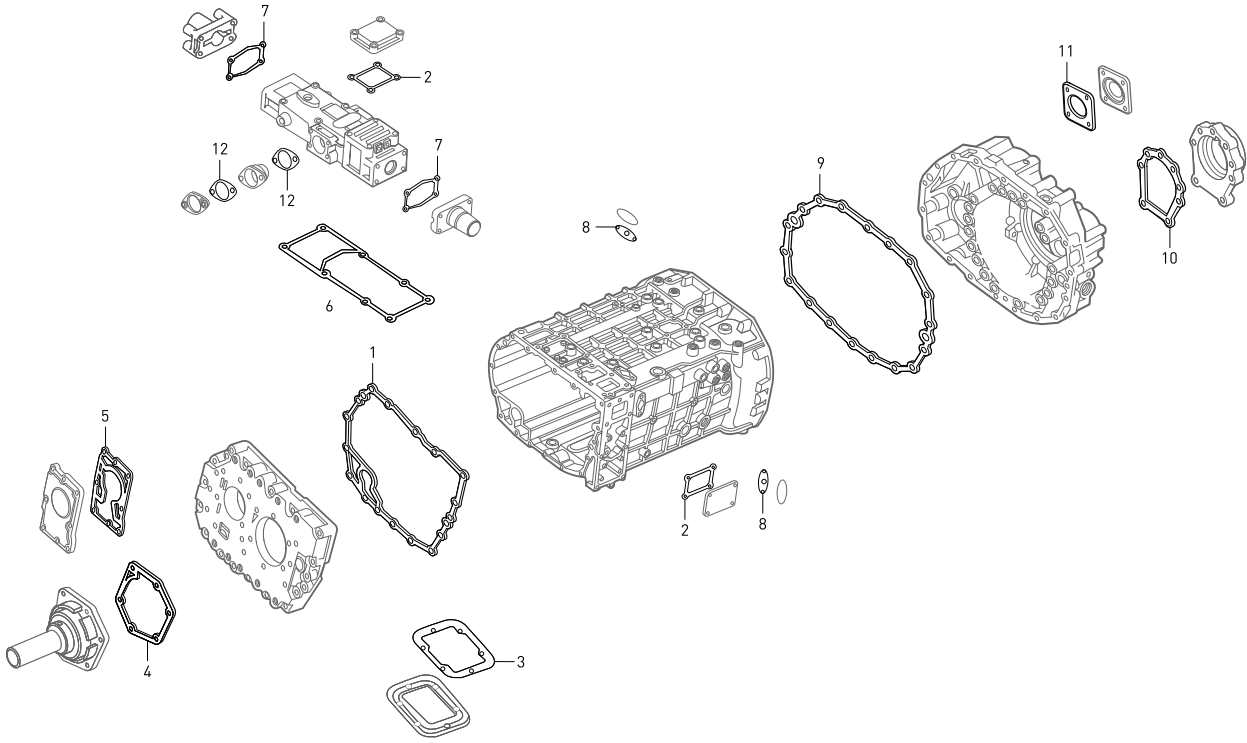


Fig.	Kacmaz No.	Oem No	Oem Old No	Pcs.	Ürün Tanımı	Description
	K20.01583	1304 298 914	{1304 298 902}	Kit	ŞANZIMAN CONTA TAKIMI	GASKET KIT
1		0501 313 379		1	ŞANZ.ÖN KAPAK CONTASI	GASKET
2		1304 307 437	{1304 307 176}	2	ŞANZ.KULE BAĞ.KAPAK CONTASI	GASKET
3		1290 301 140	{1290 301 073}	1	ŞANZ.DAMPER CONTASI	GASKET
4		0501 316 990	{0501 313 678}	1	PRİZ.KEÇE KAPAK CONTASI	GASKET
5		1304 303 297		1	YAĞ POMPA CONTASI	GASKET
6		1304 307 338		1	ŞANZ.KULE ALT CONTASI	GASKET
7		0501 318 308	{1304 307 177}	2	ŞANZ.KULE KAPAK CONTASI	GASKET
8		1268 307 170	{1268 307 091}	2	ŞANZ.MÜŞÜR KAPAK CONTASI	GASKET
9		1304 301 063	{1304 301 030}	1	ŞANZ.ARKA GÖVDE CONTASI	GASKET
10		1304 301 109	{1304 301 021}	1	ŞANZ.ARKA KEÇE KAPAK CONTASI	GASKET
11		1238 308 201	{1238 308 166}	1	PTO BAĞLANTI KAPAK CONTASI	GASKET
12		1304 207 277	{1304 307 196}	2	ŞANZ.İSTİNAT KAPAK CONTASI	GASKET